



***Y PWYLLGOR
CYNLLUNIO***

**PLANNING
COMMITTEE**

20 MEDI 2018

20 SEPTEMBER 2018

***RHANBARTH Y
GORLLEWIN***

**AREA
WEST**



***CEISIADAU YR ARGYMHELLIR EU
BOD YN CAEL EU CYMERADWYO***

**APPLICATIONS RECOMMENDED
FOR APPROVAL**



W/18258

W/18258



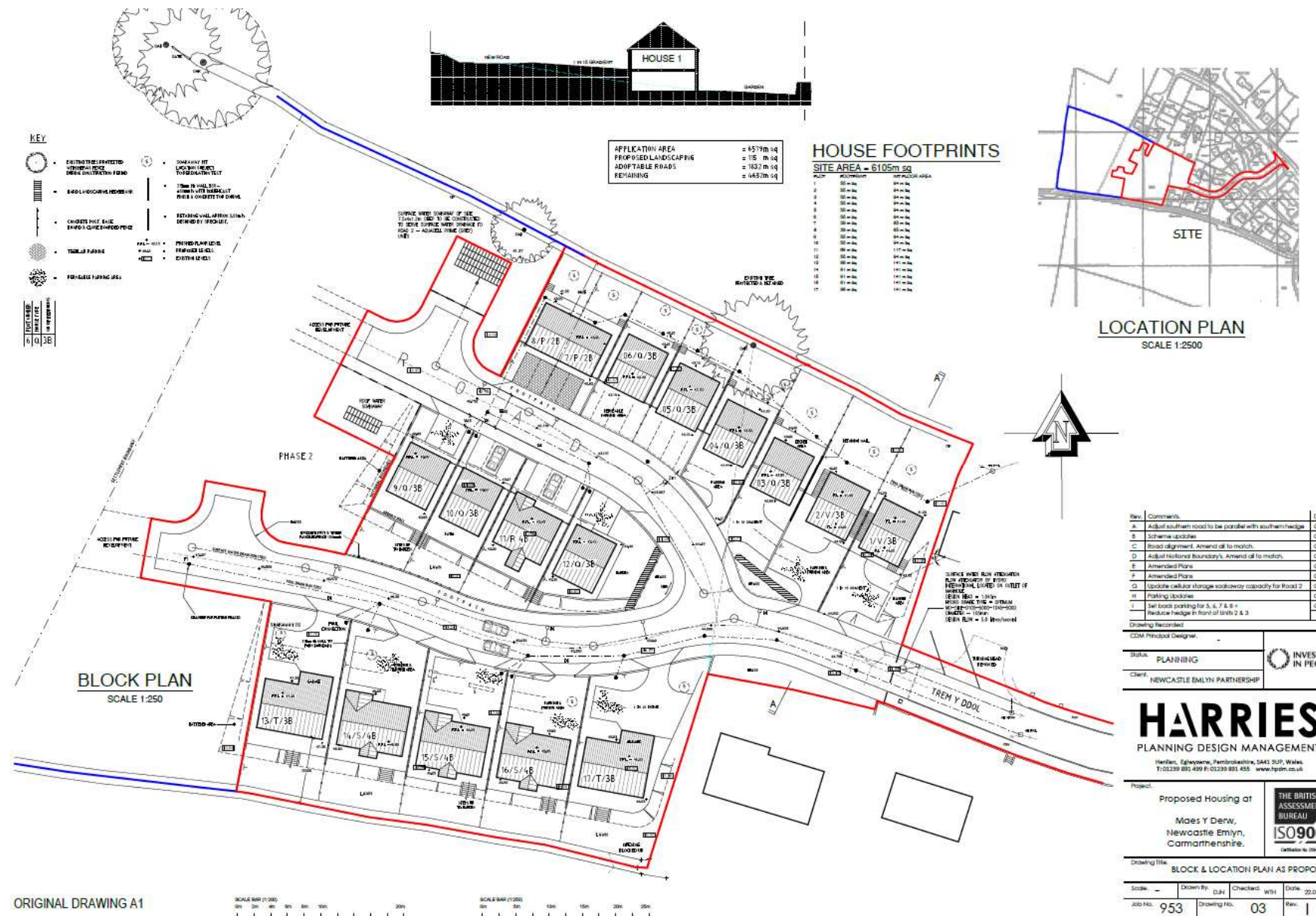
W/18258



W/18528



W/18258



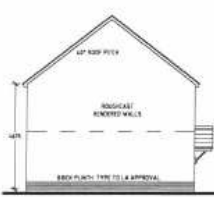
W/18258



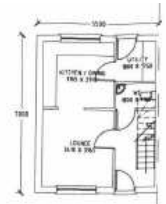
FRONT ELEVATION
HOUSE TYPE P (2 BED)
SCALE 1:100



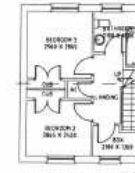
REAR ELEVATION
SCALE 1:100



SIDE ELEVATION
SCALE 1:100



GROUND FLOOR LAYOUT
HOUSE TYPE P (2 BED)
SCALE 1:100



FIRST FLOOR LAYOUT
SCALE 1:100



FRONT ELEVATION
HOUSE TYPE Q (3 BED)
SCALE 1:100



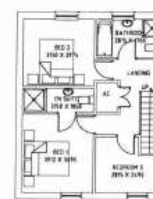
REAR ELEVATION
SCALE 1:100



SIDE ELEVATION
SCALE 1:100



GROUND FLOOR LAYOUT
HOUSE TYPE Q (3 BED)
SCALE 1:100



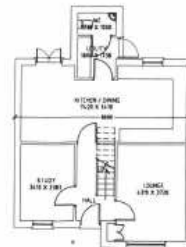
FIRST FLOOR LAYOUT
SCALE 1:100



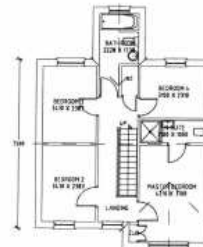
FRONT ELEVATION
HOUSE TYPE R (4 BED)
SCALE 1:100



SIDE ELEVATION
SCALE 1:100



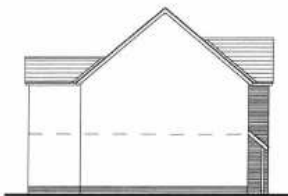
GROUND FLOOR LAYOUT
HOUSE TYPE R (4 BED)
SCALE 1:100



FIRST FLOOR LAYOUT
SCALE 1:100



REAR ELEVATION
SCALE 1:100



SIDE ELEVATION
SCALE 1:100

Rev.	Comments	Date
A	Amended Plans	06.17

Drawing Recorded	
CDM Principal Designer	
Status:	PLANNING
Client:	NEWCASTLE EMLYN PARTNERSHIP



HARRIES
PLANNING DESIGN MANAGEMENT

Heriban, Eglwysfaera, Pembrokeshire, SA41 3UP, Wales.
T: 01239 881 699 F: 01239 881 455 www.hpdn.co.uk

Project: Proposed Housing at
Maes Y Derw,
Newcastle Emlyn,
Carmarthenshire.

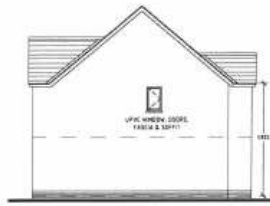
THE BRITISH ASSESSMENT BUREAU
ISO9001
Certificate No. 11600

Drawing Title: PLANS & ELEVATIONS AS PROPOSED			
Scale: -	Drawn By: DJM	Checked: WTH	Date: 22.01.2008
Job No: 022	Drawing No: 04	Rev: A	

W/18258



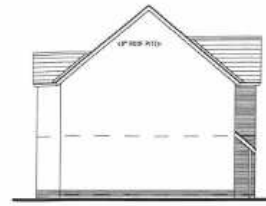
FRONT ELEVATION
HOUSE TYPE S (4 BED)
SCALE 1:100



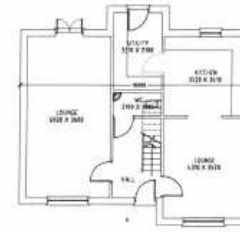
SIDE ELEVATION
SCALE 1:100



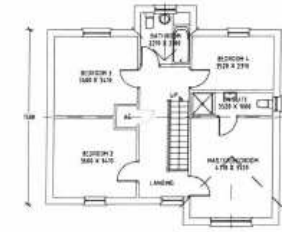
REAR ELEVATION
SCALE 1:100



SIDE ELEVATION
SCALE 1:100



GROUND FLOOR LAYOUT
HOUSE TYPE S (4 BED)
SCALE 1:100



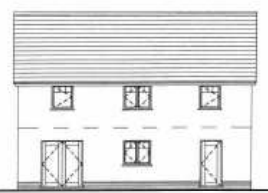
FIRST FLOOR LAYOUT
SCALE 1:100



FRONT ELEVATION
HOUSE TYPE T (3 BED)
SCALE 1:100



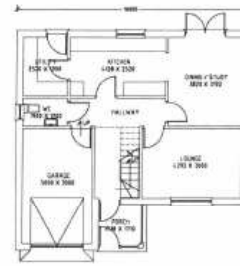
SIDE ELEVATION
SCALE 1:100



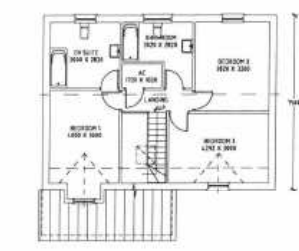
REAR ELEVATION
SCALE 1:100



SIDE ELEVATION
SCALE 1:100



GROUND FLOOR LAYOUT
HOUSE TYPE T (3 BED)
SCALE 1:100



FIRST FLOOR LAYOUT
SCALE 1:100



FRONT ELEVATION
HOUSE TYPE V (3 BED)
SCALE 1:100



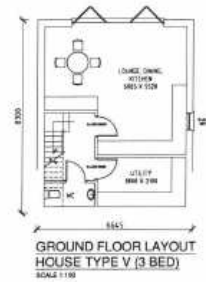
SIDE ELEVATION
SCALE 1:100



REAR ELEVATION
SCALE 1:100



SIDE ELEVATION
SCALE 1:100



GROUND FLOOR LAYOUT
HOUSE TYPE V (3 BED)
SCALE 1:100



FIRST FLOOR LAYOUT
SCALE 1:100

Rev.	Comments	Date
A.	Amended Plans	06.17

Drawing Recorded	CDM Principal Designer
Status	PLANNING
Client	NEWCASTLE EMLYN PARTNERSHIP

HARRIES
PLANNING DESIGN MANAGEMENT

Hendon, Glynysarn, Pembrokeshire, SA41 3UP, Wales
T: 01239 891 499 F: 01239 891 455 www.hpdn.co.uk

Project: Proposed Housing at
Maes Y Derw,
Newcastle Emlyn,
Carmarthenshire.

THE BRITISH
ASSESSMENT
BUREAU
ISO9001
Certificate No. 076801

Drawing Title:	PLANS & ELEVATIONS AS PROPOSED						
Scale:	As Shown	Drawn By:	DJH	Checked:	WH	Date:	22.01.2008

W/18258



W/18258



W/18258



W/18258



W/18258



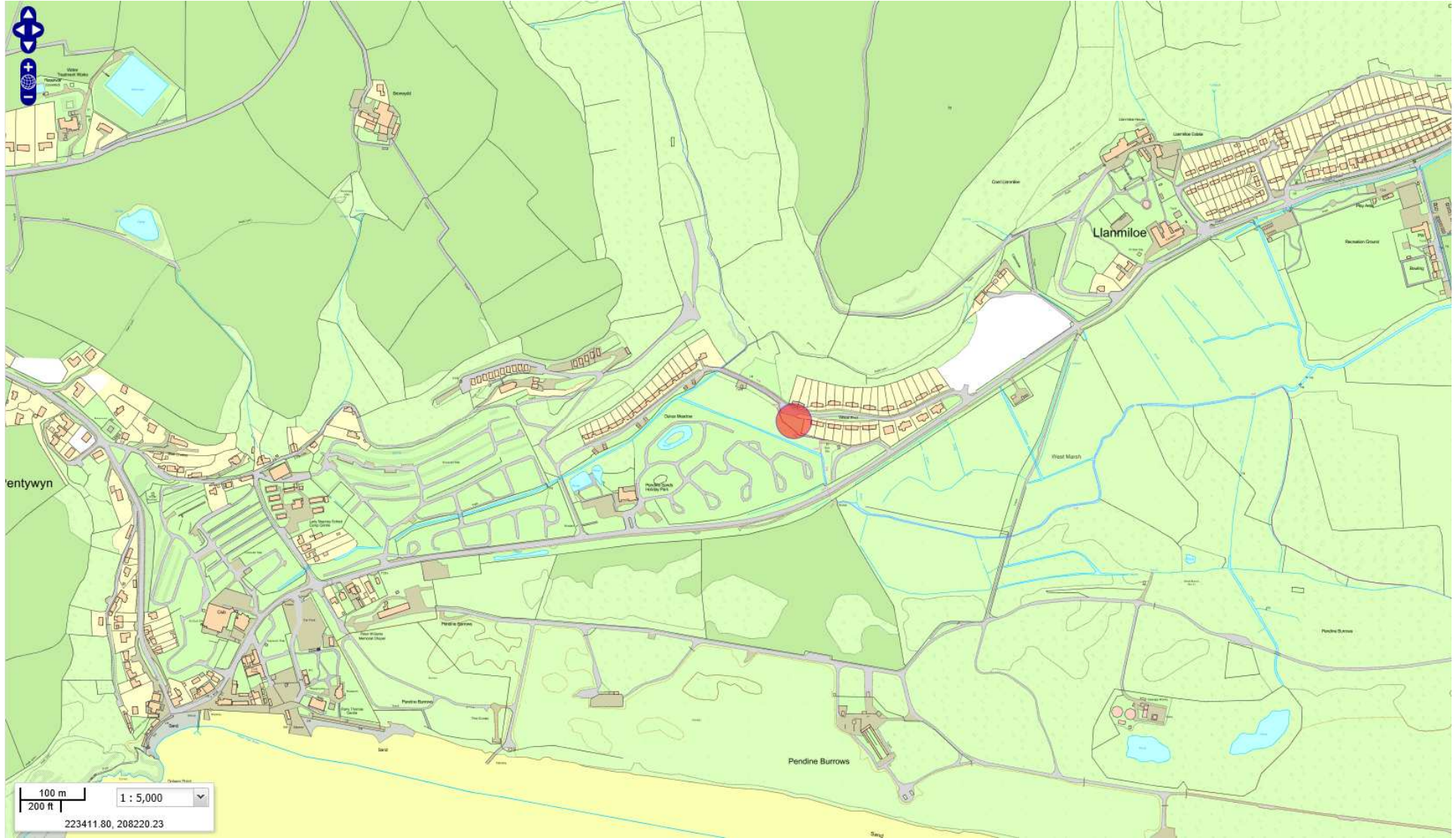
W/18258





W/37321

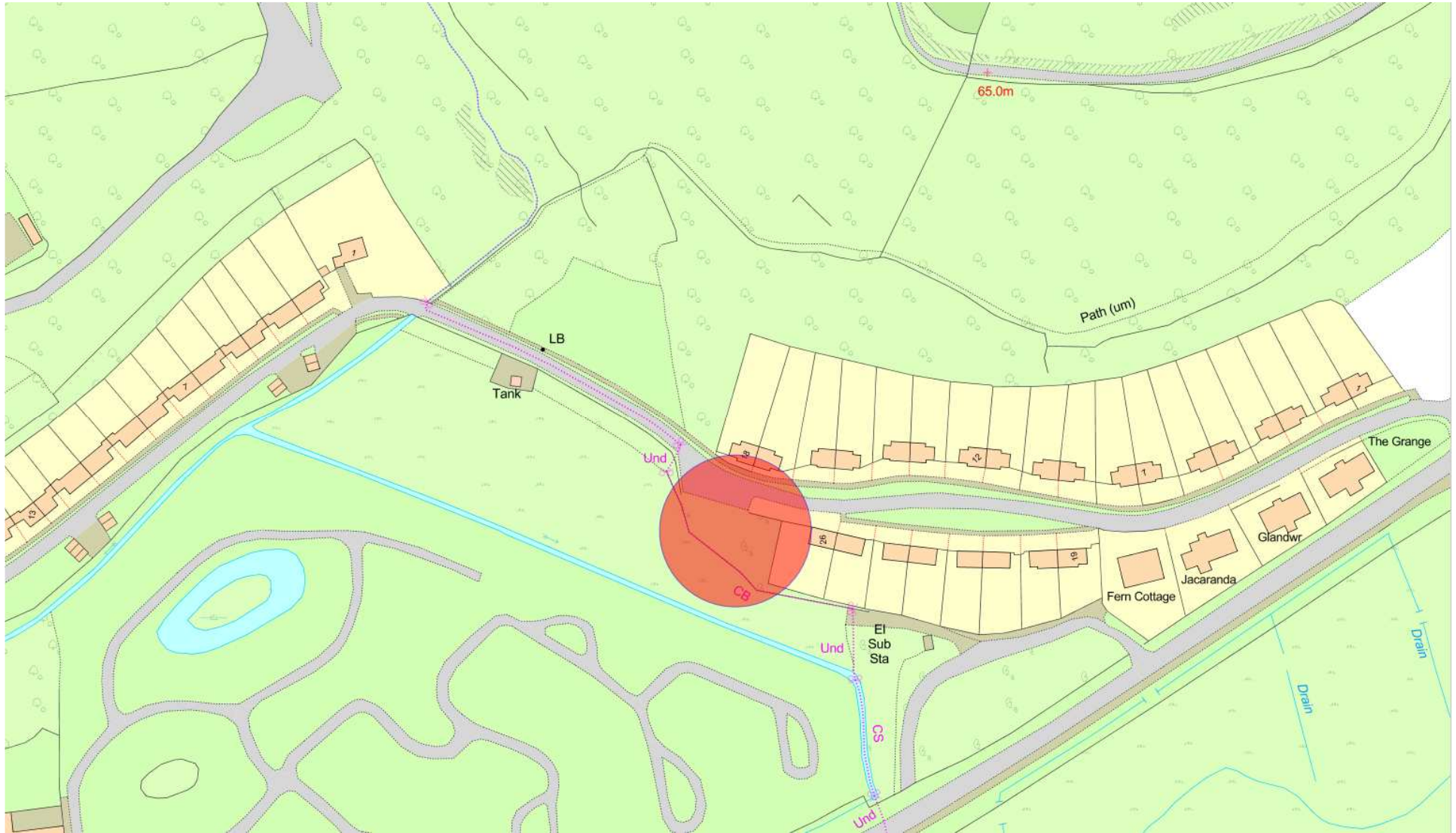
W/37321



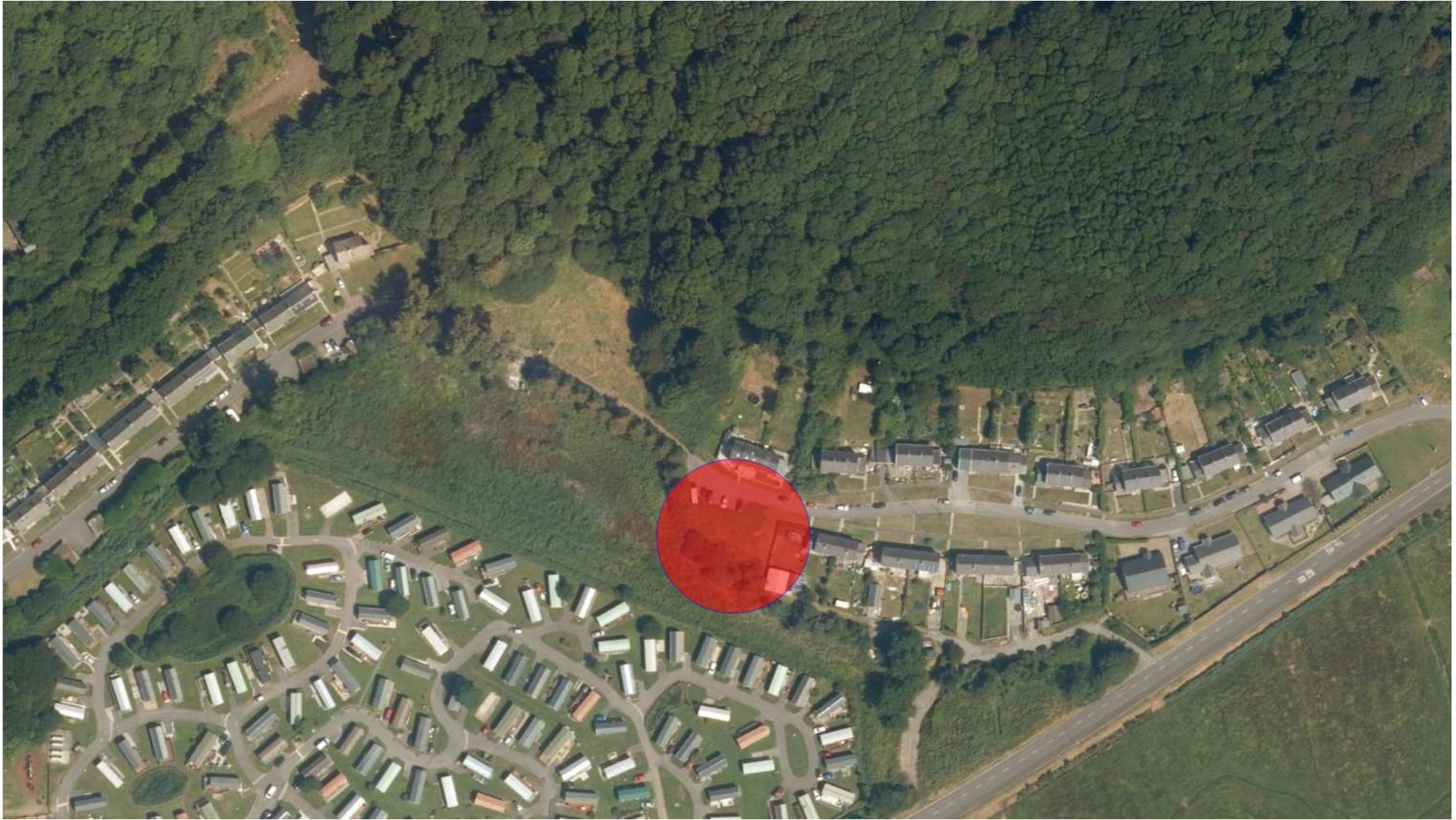
W/37321



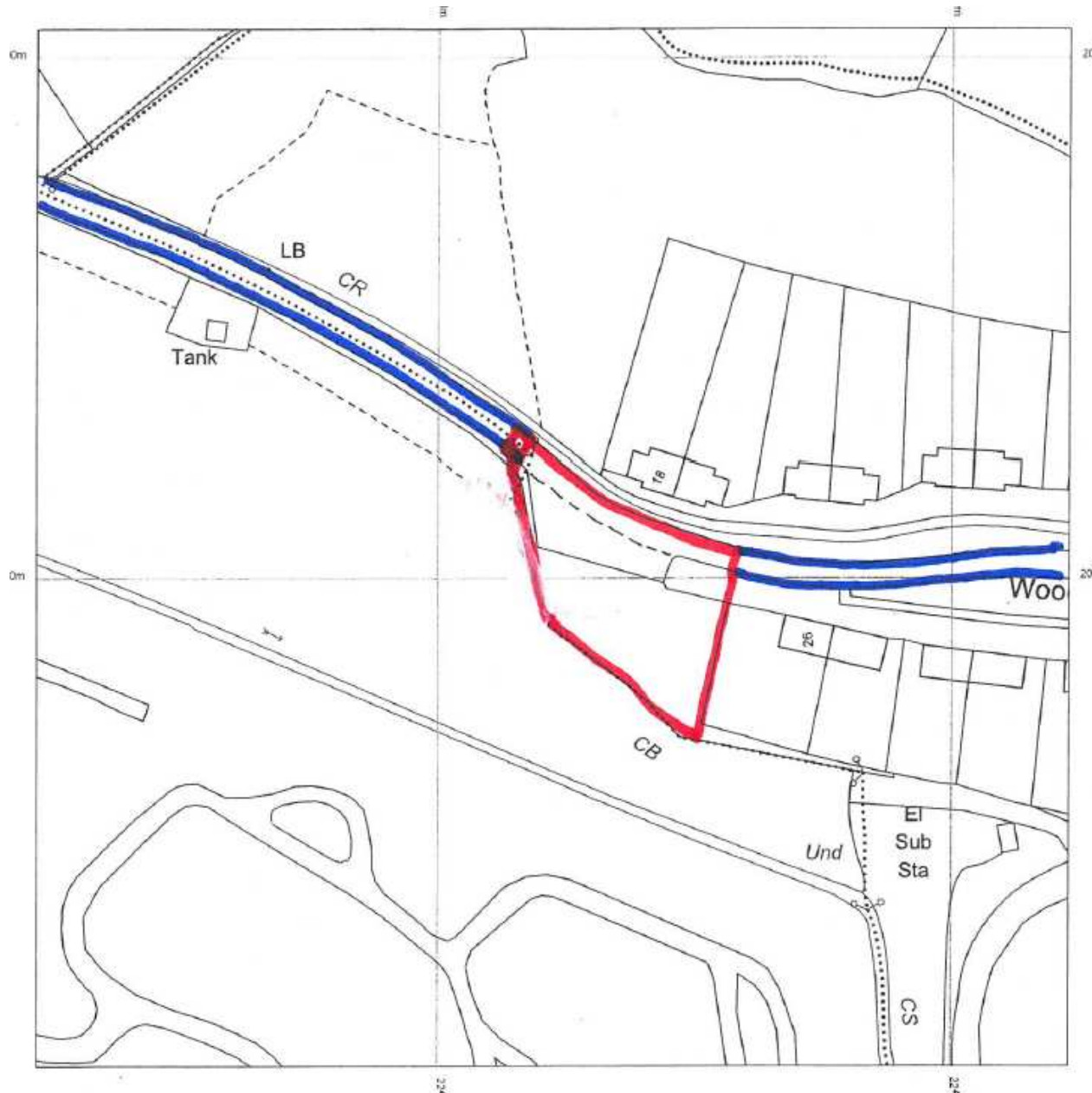
W/37321



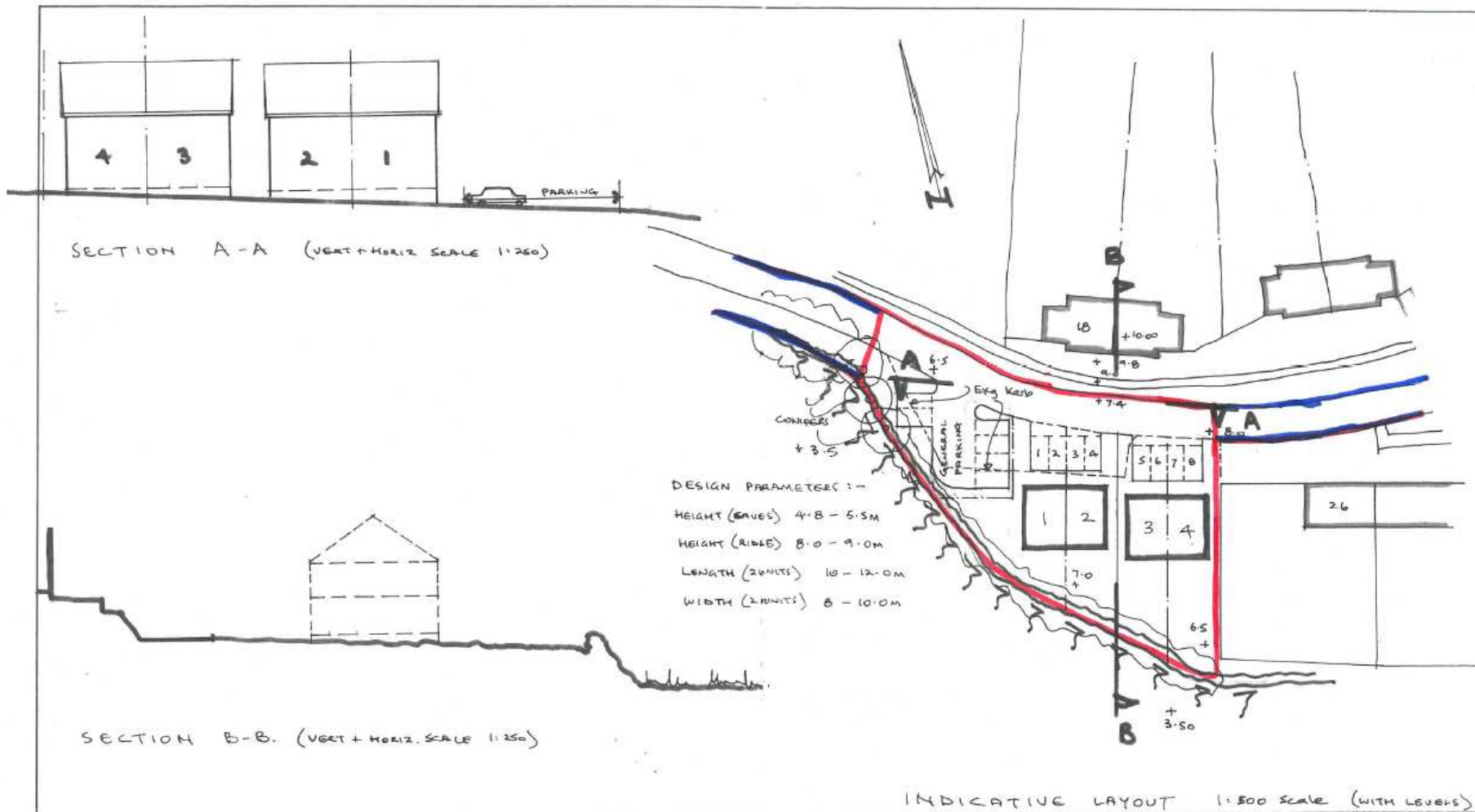
W/37321



W/37321



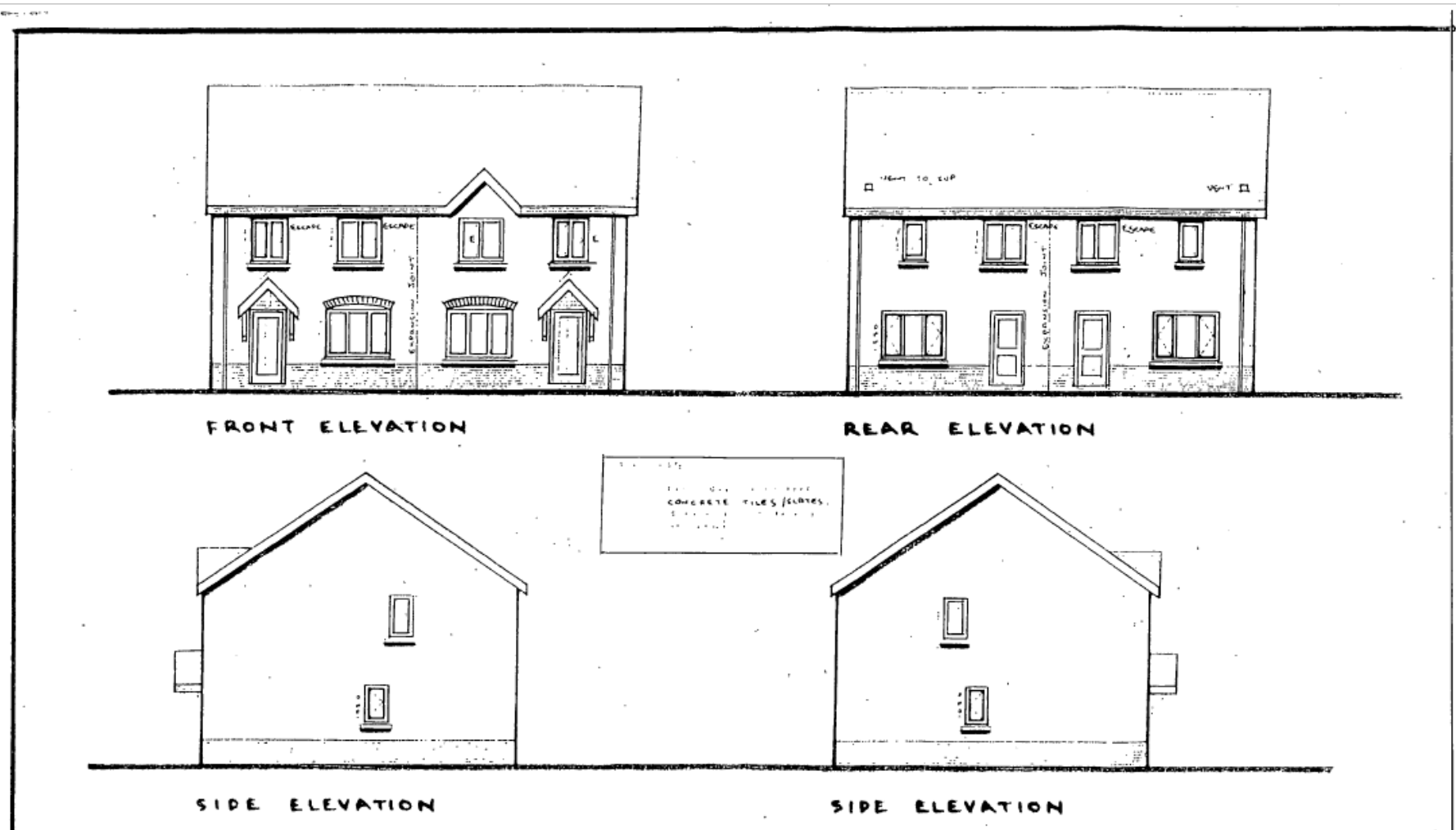
W/37321



adjacent to no. 26, Wood End.
PROPOSED HOUSING + PARKING

partneriaeth HAROLD METCALFE partnership		pensaer : architect	
32 Spilman Street, Carmarthen, Dyfed, Wales tel. Carmarthen (01267) 237427 fax. 238693			
Job Title	Scale	1:500	Revision
DUKES MEADOW / WOOD END	Date		A
Drawing Title	Drawn	AD	Dr. No.
SITE PLAN + PROPOSED HOUSING	Checked		C/4652/2A

W/37321



**DUKES MEADOW
PENDINE** INDICATIVE LAYOUT

partneriaeth HAROLD METCALFE partnership		pensaer : architect
32 Spilman Street, Carmarthen, Dyfed, Wales tel. Carmarthen (01267) 237427 fax. 238693		
Job Title	Scale	Revision
	Date	
Drawing Title	Drawn	Dr. No. C/4652/
	Checked	

W/37321



W/37321



W/37321



W/37321



W/37321



W/37321



W/37321



W/37321



W/37321



W/37321



W/37321



W/37321



W/37321



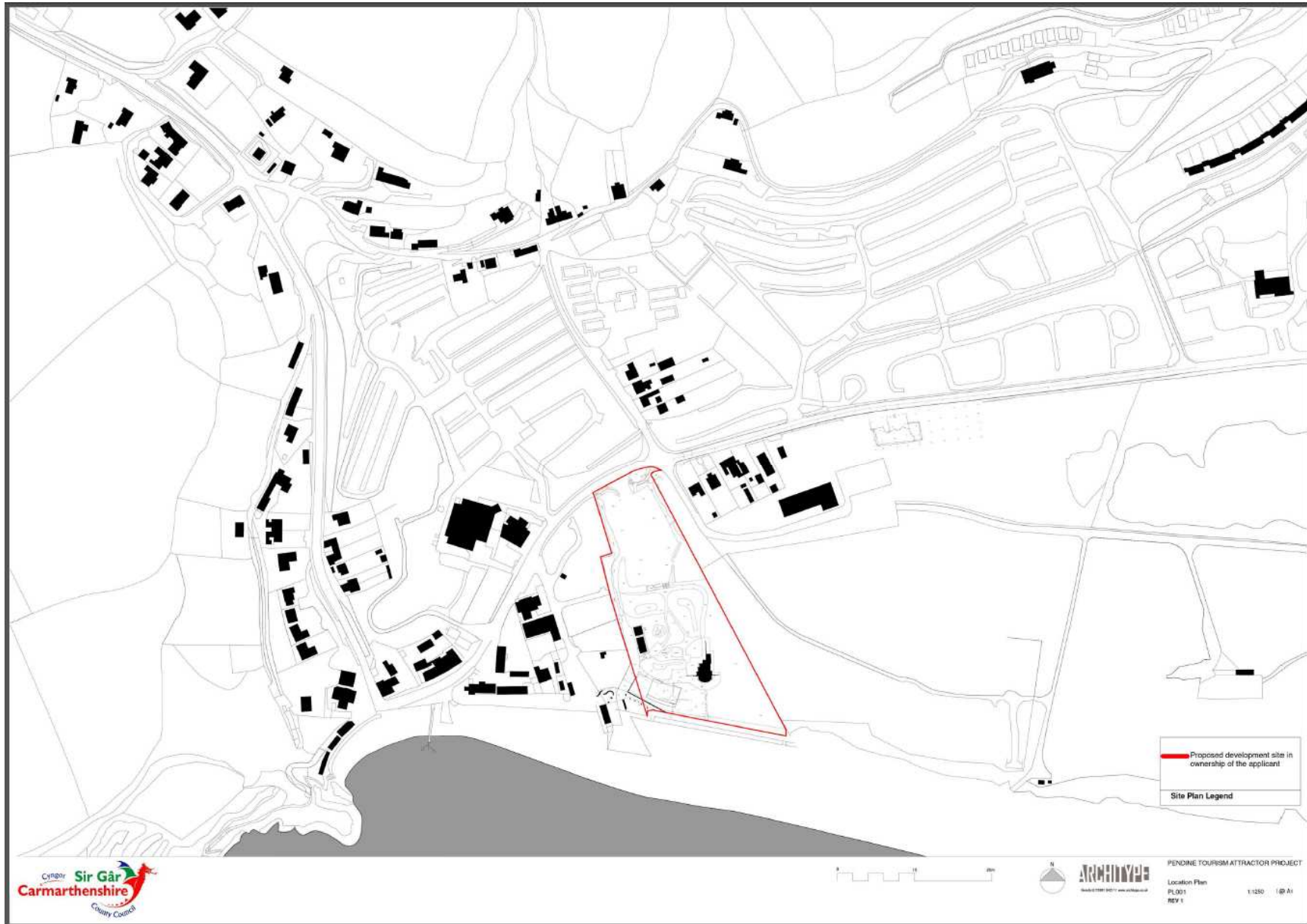
W/37321



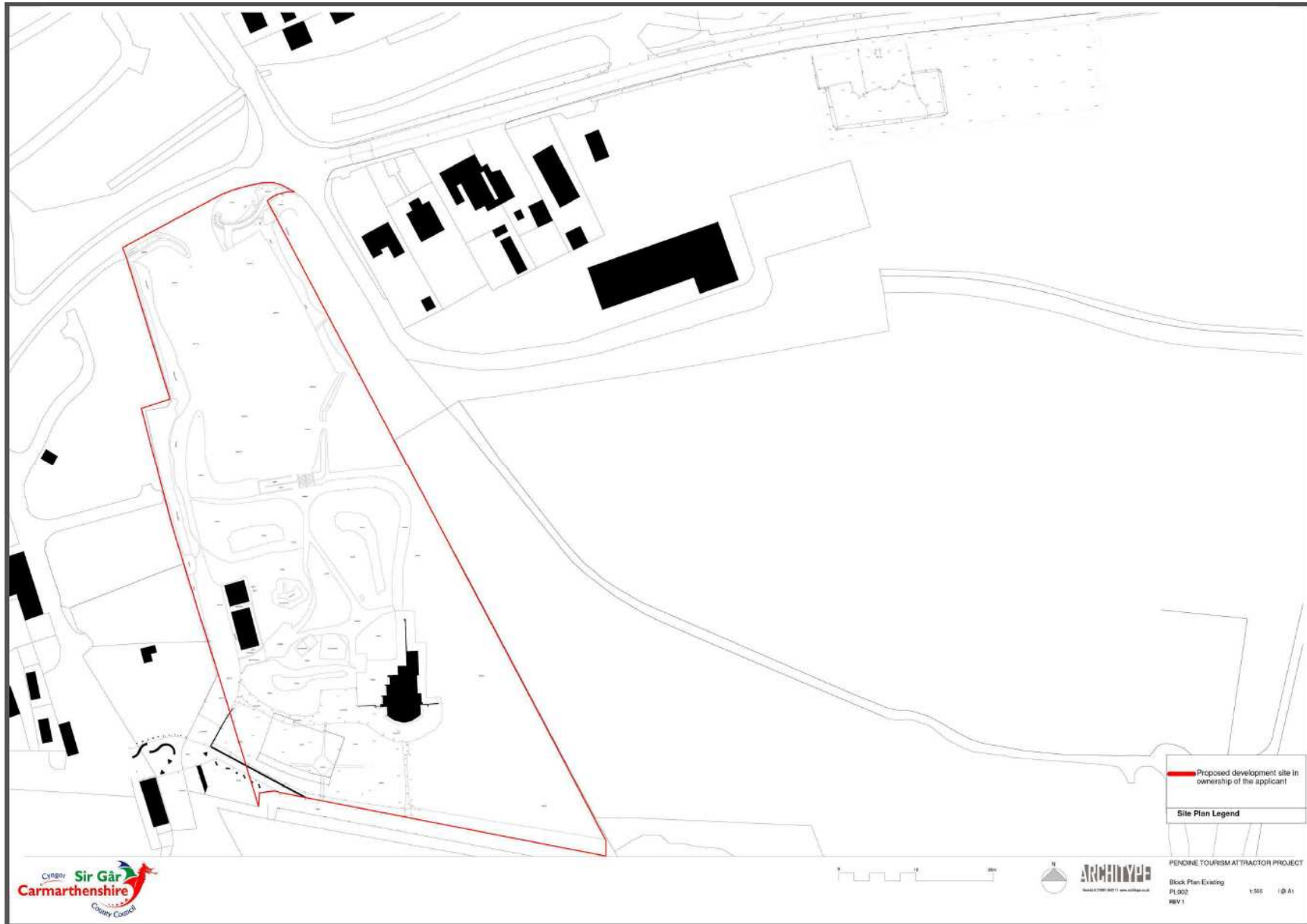


W/37415

W/37415



W/37415



W/37415



01 PLAN LANDSCAPE LAYOUT - SOUTH SCALE 1:250

- REVISIONS AND CHANGES**
- (P1) 01 - APPROX. CONCRETE SLABWORK
 - (P2) 02 - HEAVY DUTY GRAVEL RETENTION SYSTEM
 - (P3) 03 - THE WALK - MAIN PROVISIONS
 - (P4) 04 - CONCRETE FINISHES
 - (P5) 05 - CONCRETE FINISHES
 - (P6) 06 - CONCRETE FINISHES
 - (P7) 07 - CONCRETE FINISHES
 - (P8) 08 - CONCRETE FINISHES
 - (P9) 09 - CONCRETE FINISHES
 - (P10) 10 - CONCRETE FINISHES
 - (P11) 11 - CONCRETE FINISHES
 - (P12) 12 - CONCRETE FINISHES
 - (P13) 13 - CONCRETE FINISHES
 - (P14) 14 - CONCRETE FINISHES
 - (P15) 15 - CONCRETE FINISHES
 - (P16) 16 - CONCRETE FINISHES
 - (P17) 17 - CONCRETE FINISHES
 - (P18) 18 - CONCRETE FINISHES
 - (P19) 19 - CONCRETE FINISHES
 - (P20) 20 - CONCRETE FINISHES
 - (P21) 21 - CONCRETE FINISHES
 - (P22) 22 - CONCRETE FINISHES
 - (P23) 23 - CONCRETE FINISHES
 - (P24) 24 - CONCRETE FINISHES
 - (P25) 25 - CONCRETE FINISHES
 - (P26) 26 - CONCRETE FINISHES
 - (P27) 27 - CONCRETE FINISHES
 - (P28) 28 - CONCRETE FINISHES
 - (P29) 29 - CONCRETE FINISHES
 - (P30) 30 - CONCRETE FINISHES
 - (P31) 31 - CONCRETE FINISHES
 - (P32) 32 - CONCRETE FINISHES
 - (P33) 33 - CONCRETE FINISHES
 - (P34) 34 - CONCRETE FINISHES
 - (P35) 35 - CONCRETE FINISHES
 - (P36) 36 - CONCRETE FINISHES
 - (P37) 37 - CONCRETE FINISHES
 - (P38) 38 - CONCRETE FINISHES
 - (P39) 39 - CONCRETE FINISHES
 - (P40) 40 - CONCRETE FINISHES
 - (P41) 41 - CONCRETE FINISHES
 - (P42) 42 - CONCRETE FINISHES
 - (P43) 43 - CONCRETE FINISHES
 - (P44) 44 - CONCRETE FINISHES
 - (P45) 45 - CONCRETE FINISHES
 - (P46) 46 - CONCRETE FINISHES
 - (P47) 47 - CONCRETE FINISHES
 - (P48) 48 - CONCRETE FINISHES
 - (P49) 49 - CONCRETE FINISHES
 - (P50) 50 - CONCRETE FINISHES
 - (P51) 51 - CONCRETE FINISHES
 - (P52) 52 - CONCRETE FINISHES
 - (P53) 53 - CONCRETE FINISHES
 - (P54) 54 - CONCRETE FINISHES
 - (P55) 55 - CONCRETE FINISHES
 - (P56) 56 - CONCRETE FINISHES
 - (P57) 57 - CONCRETE FINISHES
 - (P58) 58 - CONCRETE FINISHES
 - (P59) 59 - CONCRETE FINISHES
 - (P60) 60 - CONCRETE FINISHES
 - (P61) 61 - CONCRETE FINISHES
 - (P62) 62 - CONCRETE FINISHES
 - (P63) 63 - CONCRETE FINISHES
 - (P64) 64 - CONCRETE FINISHES
 - (P65) 65 - CONCRETE FINISHES
 - (P66) 66 - CONCRETE FINISHES
 - (P67) 67 - CONCRETE FINISHES
 - (P68) 68 - CONCRETE FINISHES
 - (P69) 69 - CONCRETE FINISHES
 - (P70) 70 - CONCRETE FINISHES
 - (P71) 71 - CONCRETE FINISHES
 - (P72) 72 - CONCRETE FINISHES
 - (P73) 73 - CONCRETE FINISHES
 - (P74) 74 - CONCRETE FINISHES
 - (P75) 75 - CONCRETE FINISHES
 - (P76) 76 - CONCRETE FINISHES
 - (P77) 77 - CONCRETE FINISHES
 - (P78) 78 - CONCRETE FINISHES
 - (P79) 79 - CONCRETE FINISHES
 - (P80) 80 - CONCRETE FINISHES
 - (P81) 81 - CONCRETE FINISHES
 - (P82) 82 - CONCRETE FINISHES
 - (P83) 83 - CONCRETE FINISHES
 - (P84) 84 - CONCRETE FINISHES
 - (P85) 85 - CONCRETE FINISHES
 - (P86) 86 - CONCRETE FINISHES
 - (P87) 87 - CONCRETE FINISHES
 - (P88) 88 - CONCRETE FINISHES
 - (P89) 89 - CONCRETE FINISHES
 - (P90) 90 - CONCRETE FINISHES
 - (P91) 91 - CONCRETE FINISHES
 - (P92) 92 - CONCRETE FINISHES
 - (P93) 93 - CONCRETE FINISHES
 - (P94) 94 - CONCRETE FINISHES
 - (P95) 95 - CONCRETE FINISHES
 - (P96) 96 - CONCRETE FINISHES
 - (P97) 97 - CONCRETE FINISHES
 - (P98) 98 - CONCRETE FINISHES
 - (P99) 99 - CONCRETE FINISHES
 - (P100) 100 - CONCRETE FINISHES
- REVISIONS AND CHANGES**
- (R1) 01 - CONCRETE FINISHES
 - (R2) 02 - CONCRETE FINISHES
 - (R3) 03 - CONCRETE FINISHES
 - (R4) 04 - CONCRETE FINISHES
 - (R5) 05 - CONCRETE FINISHES
 - (R6) 06 - CONCRETE FINISHES
 - (R7) 07 - CONCRETE FINISHES
 - (R8) 08 - CONCRETE FINISHES
 - (R9) 09 - CONCRETE FINISHES
 - (R10) 10 - CONCRETE FINISHES
 - (R11) 11 - CONCRETE FINISHES
 - (R12) 12 - CONCRETE FINISHES
 - (R13) 13 - CONCRETE FINISHES
 - (R14) 14 - CONCRETE FINISHES
 - (R15) 15 - CONCRETE FINISHES
 - (R16) 16 - CONCRETE FINISHES
 - (R17) 17 - CONCRETE FINISHES
 - (R18) 18 - CONCRETE FINISHES
 - (R19) 19 - CONCRETE FINISHES
 - (R20) 20 - CONCRETE FINISHES
 - (R21) 21 - CONCRETE FINISHES
 - (R22) 22 - CONCRETE FINISHES
 - (R23) 23 - CONCRETE FINISHES
 - (R24) 24 - CONCRETE FINISHES
 - (R25) 25 - CONCRETE FINISHES
 - (R26) 26 - CONCRETE FINISHES
 - (R27) 27 - CONCRETE FINISHES
 - (R28) 28 - CONCRETE FINISHES
 - (R29) 29 - CONCRETE FINISHES
 - (R30) 30 - CONCRETE FINISHES
 - (R31) 31 - CONCRETE FINISHES
 - (R32) 32 - CONCRETE FINISHES
 - (R33) 33 - CONCRETE FINISHES
 - (R34) 34 - CONCRETE FINISHES
 - (R35) 35 - CONCRETE FINISHES
 - (R36) 36 - CONCRETE FINISHES
 - (R37) 37 - CONCRETE FINISHES
 - (R38) 38 - CONCRETE FINISHES
 - (R39) 39 - CONCRETE FINISHES
 - (R40) 40 - CONCRETE FINISHES
 - (R41) 41 - CONCRETE FINISHES
 - (R42) 42 - CONCRETE FINISHES
 - (R43) 43 - CONCRETE FINISHES
 - (R44) 44 - CONCRETE FINISHES
 - (R45) 45 - CONCRETE FINISHES
 - (R46) 46 - CONCRETE FINISHES
 - (R47) 47 - CONCRETE FINISHES
 - (R48) 48 - CONCRETE FINISHES
 - (R49) 49 - CONCRETE FINISHES
 - (R50) 50 - CONCRETE FINISHES
 - (R51) 51 - CONCRETE FINISHES
 - (R52) 52 - CONCRETE FINISHES
 - (R53) 53 - CONCRETE FINISHES
 - (R54) 54 - CONCRETE FINISHES
 - (R55) 55 - CONCRETE FINISHES
 - (R56) 56 - CONCRETE FINISHES
 - (R57) 57 - CONCRETE FINISHES
 - (R58) 58 - CONCRETE FINISHES
 - (R59) 59 - CONCRETE FINISHES
 - (R60) 60 - CONCRETE FINISHES
 - (R61) 61 - CONCRETE FINISHES
 - (R62) 62 - CONCRETE FINISHES
 - (R63) 63 - CONCRETE FINISHES
 - (R64) 64 - CONCRETE FINISHES
 - (R65) 65 - CONCRETE FINISHES
 - (R66) 66 - CONCRETE FINISHES
 - (R67) 67 - CONCRETE FINISHES
 - (R68) 68 - CONCRETE FINISHES
 - (R69) 69 - CONCRETE FINISHES
 - (R70) 70 - CONCRETE FINISHES
 - (R71) 71 - CONCRETE FINISHES
 - (R72) 72 - CONCRETE FINISHES
 - (R73) 73 - CONCRETE FINISHES
 - (R74) 74 - CONCRETE FINISHES
 - (R75) 75 - CONCRETE FINISHES
 - (R76) 76 - CONCRETE FINISHES
 - (R77) 77 - CONCRETE FINISHES
 - (R78) 78 - CONCRETE FINISHES
 - (R79) 79 - CONCRETE FINISHES
 - (R80) 80 - CONCRETE FINISHES
 - (R81) 81 - CONCRETE FINISHES
 - (R82) 82 - CONCRETE FINISHES
 - (R83) 83 - CONCRETE FINISHES
 - (R84) 84 - CONCRETE FINISHES
 - (R85) 85 - CONCRETE FINISHES
 - (R86) 86 - CONCRETE FINISHES
 - (R87) 87 - CONCRETE FINISHES
 - (R88) 88 - CONCRETE FINISHES
 - (R89) 89 - CONCRETE FINISHES
 - (R90) 90 - CONCRETE FINISHES
 - (R91) 91 - CONCRETE FINISHES
 - (R92) 92 - CONCRETE FINISHES
 - (R93) 93 - CONCRETE FINISHES
 - (R94) 94 - CONCRETE FINISHES
 - (R95) 95 - CONCRETE FINISHES
 - (R96) 96 - CONCRETE FINISHES
 - (R97) 97 - CONCRETE FINISHES
 - (R98) 98 - CONCRETE FINISHES
 - (R99) 99 - CONCRETE FINISHES
 - (R100) 100 - CONCRETE FINISHES

DISCLAIMER

COE DESIGN AND ARCHITECTURE LTD. IS NOT RESPONSIBLE FOR THE DESIGN OR CONSTRUCTION OF ANY STRUCTURE OR INSTALLATION UNLESS IT IS SPECIFICALLY IDENTIFIED AS SUCH IN THE CONTRACT DOCUMENTS. THE CLIENT IS RESPONSIBLE FOR OBTAINING ALL NECESSARY PERMITS AND APPROVALS FROM THE LOCAL AUTHORITY AND OTHER RELEVANT AGENCIES. THE CLIENT IS RESPONSIBLE FOR THE DESIGN AND CONSTRUCTION OF ANY STRUCTURE OR INSTALLATION UNLESS IT IS SPECIFICALLY IDENTIFIED AS SUCH IN THE CONTRACT DOCUMENTS. THE CLIENT IS RESPONSIBLE FOR OBTAINING ALL NECESSARY PERMITS AND APPROVALS FROM THE LOCAL AUTHORITY AND OTHER RELEVANT AGENCIES.

SCALE 1:250

KEY

- EXISTING TREES TO BE RETAINED
- EXISTING TREES TO BE REMOVED
- PROPOSED TREES
- PROPOSED GRASSLAND AND OPENLAND COVER
- PROPOSED GRASSLAND (GRAVEL) / CLUNG GRASSLAND (WET)
- EXISTING CURB GRASSLAND
- EXISTING LEVELS
- PROPOSED LEVELS
- TOP OF WALL HEIGHT
- PROPOSED WALL
- PROPOSED FENCE

Notes

Refer to South Landscape Strategy, Landscape Boundary Sections and Landscape Layouts covering the north site to the north and south and the north home parking area.

Boundary

Areas of high ground and proposed trees within and in proximity to the site of the proposed development should be retained and protected. The use of retention, protection and signage should be considered early on in the design process to ensure that the proposed development is sited in a suitable location and does not impact on the surrounding landscape. The proposed development should be sited in a suitable location and does not impact on the surrounding landscape. The proposed development should be sited in a suitable location and does not impact on the surrounding landscape.

Planting

Planting should be sited in a suitable location and does not impact on the surrounding landscape. The proposed development should be sited in a suitable location and does not impact on the surrounding landscape. The proposed development should be sited in a suitable location and does not impact on the surrounding landscape.

Requirements for the site

The site should be sited in a suitable location and does not impact on the surrounding landscape. The proposed development should be sited in a suitable location and does not impact on the surrounding landscape. The proposed development should be sited in a suitable location and does not impact on the surrounding landscape.

Refer to

- Refer to South Landscape Strategy, Landscape Boundary Sections and Landscape Layouts covering the north site to the north and south and the north home parking area.
- Refer to South Landscape Strategy, Landscape Boundary Sections and Landscape Layouts covering the north site to the north and south and the north home parking area.
- Refer to South Landscape Strategy, Landscape Boundary Sections and Landscape Layouts covering the north site to the north and south and the north home parking area.

COE DESIGN
landscape architecture

231 Pendine Tourism Attractor Project

LANDSCAPE LAYOUT (1 of 3)

231-COLA-A1-00-OR-L-0200 00

Tender Issue

1:250 at A1 / 1:500 at A3 09.05.2018

Job JC

Camrathshire County Council

W/37415

Landmark Trees **Vegetating Trees**

Total		Quart 1		Quart 2		Quart 3		Quart 4	
Area	Count	Area	Count	Area	Count	Area	Count	Area	Count
Landmark	0	Landmark	0	Landmark	0	Landmark	0	Landmark	0
Vegetating	0	Vegetating	0	Vegetating	0	Vegetating	0	Vegetating	0
Total	0	Total	0	Total	0	Total	0	Total	0

Combed Strand Trees and Vegetative Trees

Total		Quart 1		Quart 2		Quart 3		Quart 4	
Area	Count	Area	Count	Area	Count	Area	Count	Area	Count
Combed Strand	0	Combed Strand	0	Combed Strand	0	Combed Strand	0	Combed Strand	0
Vegetative	0	Vegetative	0	Vegetative	0	Vegetative	0	Vegetative	0
Total	0	Total	0	Total	0	Total	0	Total	0

Copse Mix A

Total		Quart 1		Quart 2		Quart 3		Quart 4	
Area	Count	Area	Count	Area	Count	Area	Count	Area	Count
Copse Mix A	0	Copse Mix A	0	Copse Mix A	0	Copse Mix A	0	Copse Mix A	0
Total	0	Total	0	Total	0	Total	0	Total	0

Wedge Vegetation Area - Cope Mix B

Total		Quart 1		Quart 2		Quart 3		Quart 4	
Area	Count	Area	Count	Area	Count	Area	Count	Area	Count
Wedge	0	Wedge	0	Wedge	0	Wedge	0	Wedge	0
Total	0	Total	0	Total	0	Total	0	Total	0

Combed Strand Emergent Areas

Total		Quart 1		Quart 2		Quart 3		Quart 4	
Area	Count	Area	Count	Area	Count	Area	Count	Area	Count
Emergent	0	Emergent	0	Emergent	0	Emergent	0	Emergent	0
Total	0	Total	0	Total	0	Total	0	Total	0

Combed Strand Emergent Areas

Total		Quart 1		Quart 2		Quart 3		Quart 4	
Area	Count	Area	Count	Area	Count	Area	Count	Area	Count
Emergent	0	Emergent	0	Emergent	0	Emergent	0	Emergent	0
Total	0	Total	0	Total	0	Total	0	Total	0

Combed Strand Emergent Areas

Total		Quart 1		Quart 2		Quart 3		Quart 4	
Area	Count	Area	Count	Area	Count	Area	Count	Area	Count
Emergent	0	Emergent	0	Emergent	0	Emergent	0	Emergent	0
Total	0	Total	0	Total	0	Total	0	Total	0

Vegetated Mix

Total		Quart 1		Quart 2		Quart 3		Quart 4	
Area	Count	Area	Count	Area	Count	Area	Count	Area	Count
Vegetated Mix	0	Vegetated Mix	0	Vegetated Mix	0	Vegetated Mix	0	Vegetated Mix	0
Total	0	Total	0	Total	0	Total	0	Total	0

Vegetated Mix

Total		Quart 1		Quart 2		Quart 3		Quart 4	
Area	Count	Area	Count	Area	Count	Area	Count	Area	Count
Vegetated Mix	0	Vegetated Mix	0	Vegetated Mix	0	Vegetated Mix	0	Vegetated Mix	0
Total	0	Total	0	Total	0	Total	0	Total	0

Vegetated Mix

Total		Quart 1		Quart 2		Quart 3		Quart 4	
Area	Count	Area	Count	Area	Count	Area	Count	Area	Count
Vegetated Mix	0	Vegetated Mix	0	Vegetated Mix	0	Vegetated Mix	0	Vegetated Mix	0
Total	0	Total	0	Total	0	Total	0	Total	0

Vegetated Mix

Total		Quart 1		Quart 2		Quart 3		Quart 4	
Area	Count	Area	Count	Area	Count	Area	Count	Area	Count
Vegetated Mix	0	Vegetated Mix	0	Vegetated Mix	0	Vegetated Mix	0	Vegetated Mix	0
Total	0	Total	0	Total	0	Total	0	Total	0

Combed Strand Emergent Areas

Total		Quart 1		Quart 2		Quart 3		Quart 4	
Area	Count	Area	Count	Area	Count	Area	Count	Area	Count
Emergent	0	Emergent	0	Emergent	0	Emergent	0	Emergent	0
Total	0	Total	0	Total	0	Total	0	Total	0

Combed Strand Emergent Areas

Total		Quart 1		Quart 2		Quart 3		Quart 4	
Area	Count	Area	Count	Area	Count	Area	Count	Area	Count
Emergent	0	Emergent	0	Emergent	0	Emergent	0	Emergent	0
Total	0	Total	0	Total	0	Total	0	Total	0

Combed Strand Emergent Areas

Total		Quart 1		Quart 2		Quart 3		Quart 4	
Area	Count	Area	Count	Area	Count	Area	Count	Area	Count
Emergent	0	Emergent	0	Emergent	0	Emergent	0	Emergent	0
Total	0	Total	0	Total	0	Total	0	Total	0

Combed Strand Emergent Areas

Total		Quart 1		Quart 2		Quart 3		Quart 4	
Area	Count	Area	Count	Area	Count	Area	Count	Area	Count
Emergent	0	Emergent	0	Emergent	0	Emergent	0	Emergent	0
Total	0	Total	0	Total	0	Total	0	Total	0

Combed Strand Emergent Areas

Total		Quart 1		Quart 2		Quart 3		Quart 4	
Area	Count	Area	Count	Area	Count	Area	Count	Area	Count
Emergent	0	Emergent	0	Emergent	0	Emergent	0	Emergent	0
Total	0	Total	0	Total	0	Total	0	Total	0

Combed Strand Emergent Areas

Total		Quart 1		Quart 2		Quart 3		Quart 4	
Area	Count	Area	Count	Area	Count	Area	Count	Area	Count
Emergent	0	Emergent	0	Emergent	0	Emergent	0	Emergent	0
Total	0	Total	0	Total	0	Total	0	Total	0

Combed Strand Emergent Areas

Total		Quart 1		Quart 2		Quart 3		Quart 4	
Area	Count	Area	Count	Area	Count	Area	Count	Area	Count
Emergent	0	Emergent	0	Emergent	0	Emergent	0	Emergent	0
Total	0	Total	0	Total	0	Total	0	Total	0

Combed Strand Emergent Areas

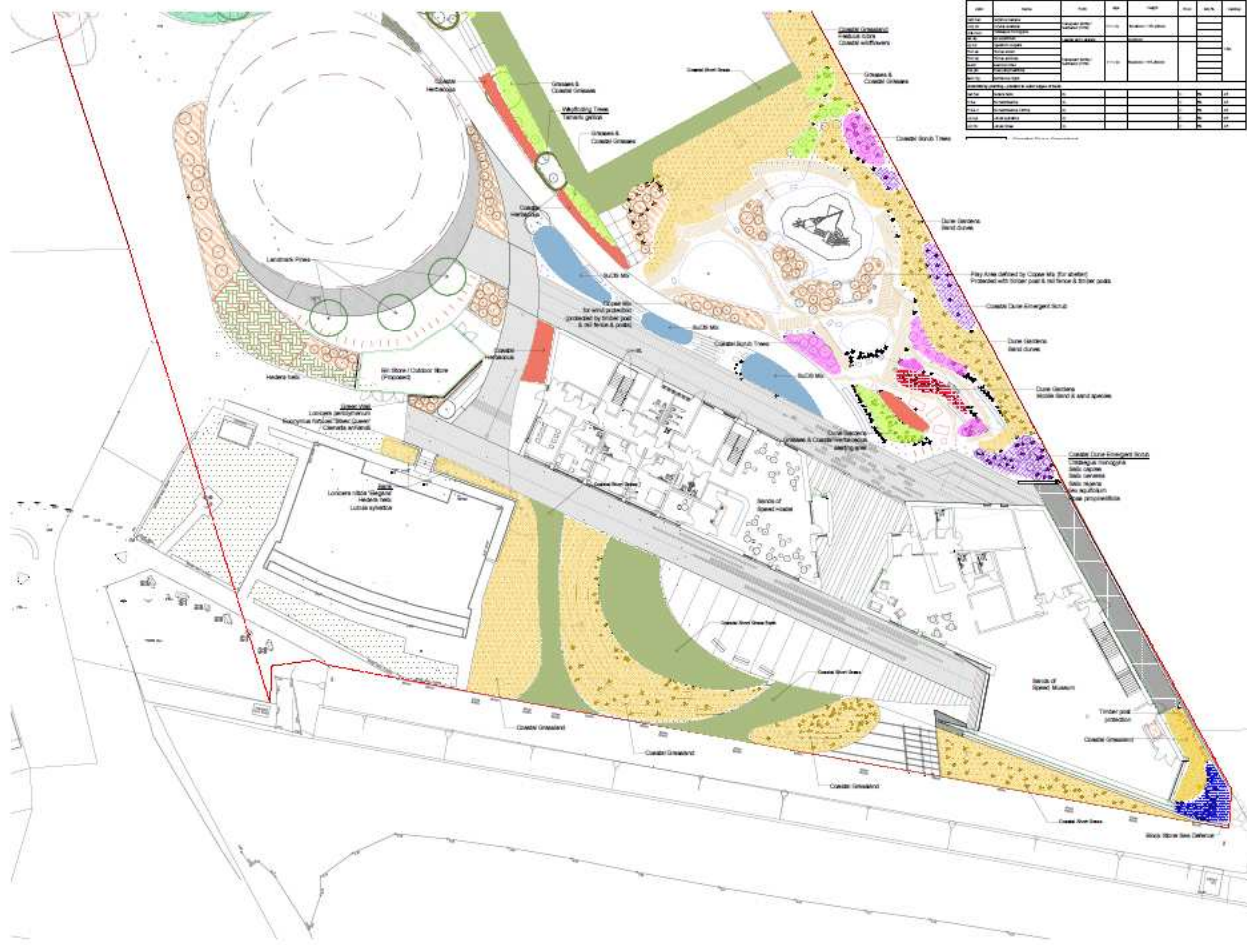
Total		Quart 1		Quart 2		Quart 3		Quart 4	
Area	Count	Area	Count	Area	Count	Area	Count	Area	Count
Emergent	0	Emergent	0	Emergent	0	Emergent	0	Emergent	0
Total	0	Total	0	Total	0	Total	0	Total	0

Combed Strand Emergent Areas

Total		Quart 1		Quart 2		Quart 3		Quart 4	
Area	Count	Area	Count	Area	Count	Area	Count	Area	Count
Emergent	0	Emergent	0	Emergent	0	Emergent	0	Emergent	0
Total	0	Total	0	Total	0	Total	0	Total	0

Combed Strand Emergent Areas

Total		Quart 1		Quart 2		Quart 3		Quart 4	
Area	Count	Area	Count	Area	Count	Area	Count	Area	Count
Emergent	0	Emergent	0	Emergent	0	Emergent	0	Emergent	0
Total	0	Total	0	Total	0	Total	0	Total	0



DISCLAIMER
COE DESIGN LANDSCAPE ARCHITECTURE uses only figures, dimensions, ALL information that will be the sole responsibility for being and checking the drawings before the work or the work of COE DESIGN ARCHITECTURE. COE DESIGN ARCHITECTURE is not responsible for any work or conditions not as specified in COE DESIGN ARCHITECTURE.

SCALE 1:200

KEY
 EXISTING TREES TO BE RETAINED
 EXISTING TREES TO BE REMOVED
 PROPOSED TREES
 PROPOSED GRASS AND GROUND COVER
 GRASS LAWNS, MIXED LOWER WOODLAND AND COASTAL CLIFFS, GROUNDWATER WOODS
 EXISTING GRASSLAND
 EXISTING LEVELS
 PROPOSED LEVELS
 TOP OF WALL HEIGHT
 EXISTING

Notes
 Areas of rough, down and present cover mostly those within and adjacent to the site of the building. Areas of rough cover should be retained and underpinning, including protection zones and refuelling to be undertaken within the rough cover. Areas of rough cover should be retained and underpinning, including protection zones and refuelling to be undertaken within the rough cover.

Vegetation
 The planting scheme to create good vegetation (including the use of native plants and species) should be undertaken within the site. Areas of rough cover should be retained and underpinning, including protection zones and refuelling to be undertaken within the rough cover. Areas of rough cover should be retained and underpinning, including protection zones and refuelling to be undertaken within the rough cover.

Building Trees
 Trees of the same species that are to be retained should be planted during the development works in accordance with BS5823:2012 and BS5823:2012:2012. Areas of rough cover should be retained and underpinning, including protection zones and refuelling to be undertaken within the rough cover.

PLEASE READ IN CONJUNCTION WITH
 231-Pendine-Tourism-Attractor-Project

COE DESIGN
 landscape architecture

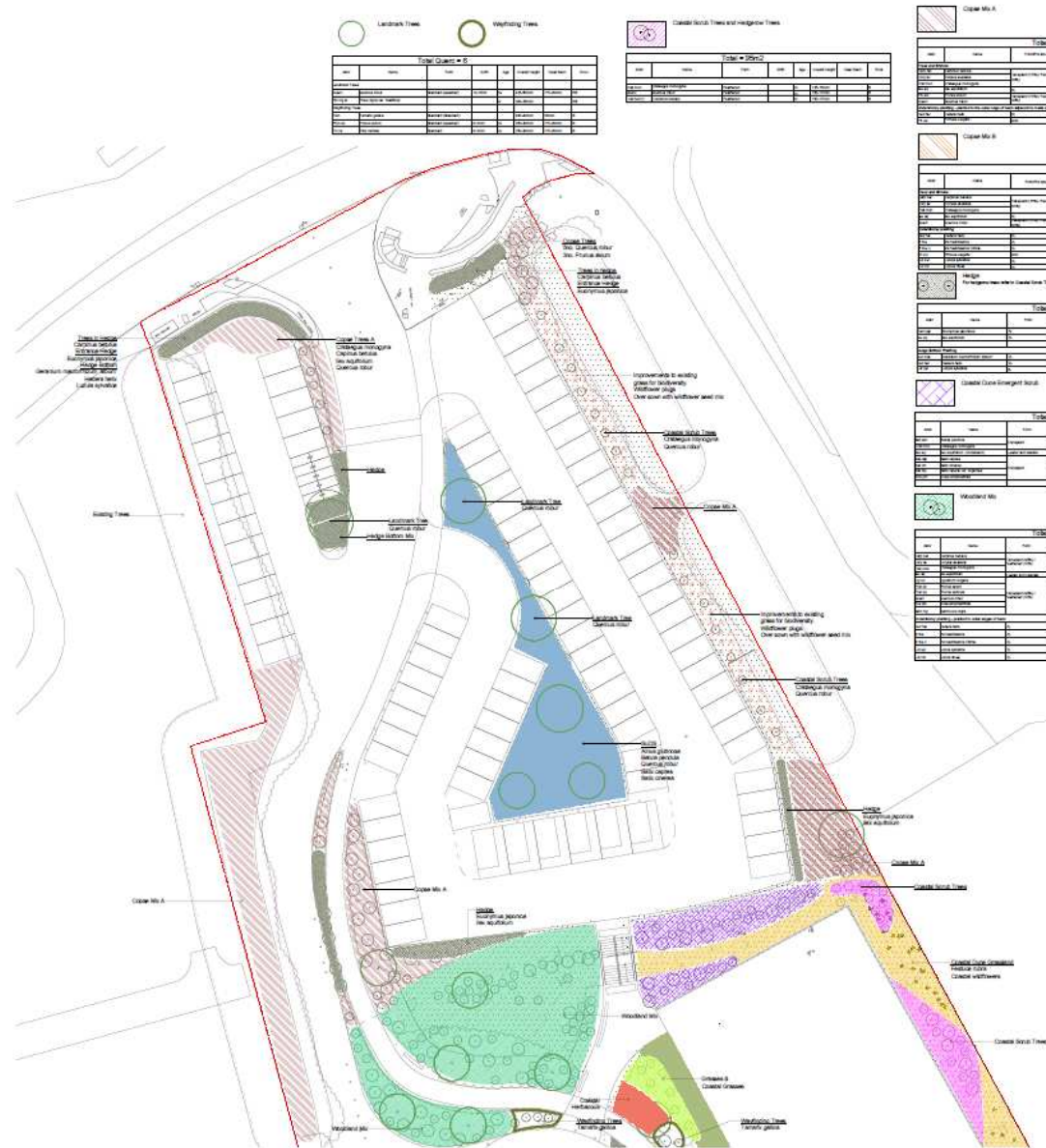
231 Pendine Tourism Attractor Project

SOFT LANDSCAPE STRATEGY (1 of 3)

Tender Issue
 DATE: 09.05.2018
 TIME: 1:30 PM / 1:50 PM AT A3

Camarnthenry County Council

W/37415



Legend: ○ Landmark Trees, ○ Weeping Trees

TOTAL QUANTITY	
Tree Type	Quantity
...	...

TOTAL QUANTITY	
Tree Type	Quantity
...	...

Climax MA

Tree Type	Quantity	Planting Zone
...

Grass MA

Tree Type	Quantity	Planting Zone
...

Meadow MA

Tree Type	Quantity	Planting Zone
...

Woodland MA

Tree Type	Quantity	Planting Zone
...

Grass MA

Tree Type	Quantity	Planting Zone
...

Grass MA

Tree Type	Quantity	Planting Zone
...

Grass MA

Tree Type	Quantity	Planting Zone
...

Grass MA

Tree Type	Quantity	Planting Zone
...

Grass MA

Tree Type	Quantity	Planting Zone
...

Grass MA

Tree Type	Quantity	Planting Zone
...

Grass MA

Tree Type	Quantity	Planting Zone
...

Grass MA

Tree Type	Quantity	Planting Zone
...

Grass MA

Tree Type	Quantity	Planting Zone
...

Grass MA

Tree Type	Quantity	Planting Zone
...

Grass MA

Tree Type	Quantity	Planting Zone
...

Grass MA

Tree Type	Quantity	Planting Zone
...

Grass MA

Tree Type	Quantity	Planting Zone
...

DISCLAIMER
 COE DESIGN LANDSCAPE ARCHITECTURE (LCA) HAS PREPARED THIS DOCUMENT FOR THE CLIENT AND ITS USE IS LIMITED TO THE PROJECT AND SITE SPECIFICALLY IDENTIFIED IN THE TITLE SHEET. COE DESIGN LANDSCAPE ARCHITECTURE (LCA) ACCEPTS NO LIABILITY FOR ANY UNLAWFUL OR MISAPPLIED USE OF THIS DOCUMENT. ANY UNLAWFUL OR MISAPPLIED USE OF THIS DOCUMENT IS THE SOLE RESPONSIBILITY OF THE USER. COE DESIGN LANDSCAPE ARCHITECTURE (LCA) IS NOT RESPONSIBLE FOR ANY UNLAWFUL OR MISAPPLIED USE OF THIS DOCUMENT. ANY UNLAWFUL OR MISAPPLIED USE OF THIS DOCUMENT IS THE SOLE RESPONSIBILITY OF THE USER.

SCALE: 1:500

KEY:

- EXISTING TREES TO BE RETAINED
- EXISTING TREES TO BE REMOVED
- PROPOSED TREES
- PROPOSED GRASSES AND SOFT PLANTINGS
- GRASS LAYERS, WILD FLOWER MEADOWS AND COASTAL / CLIFF GRASSLANDS MIXES
- EXISTING CLIFF GRASSLANDS
- EXISTING LEVELS
- PROPOSED LEVELS
- TOP OF WALL HEIGHT

Notes:

- Planting:** Areas of high slope and ground level changes shall be planted with appropriate vegetation to stabilize the soil and prevent erosion. The use of mulches, landscape fabric and geotextiles shall be used to retain soil and prevent erosion. The use of landscape fabric and geotextiles shall be used to retain soil and prevent erosion. The use of landscape fabric and geotextiles shall be used to retain soil and prevent erosion.
- Grass MA:** Grass MA shall be planted in areas of high slope and ground level changes. The use of mulches, landscape fabric and geotextiles shall be used to retain soil and prevent erosion. The use of landscape fabric and geotextiles shall be used to retain soil and prevent erosion.
- Water Features:** Water features shall be planted in areas of high slope and ground level changes. The use of mulches, landscape fabric and geotextiles shall be used to retain soil and prevent erosion. The use of landscape fabric and geotextiles shall be used to retain soil and prevent erosion.

PLEASE READ IN CONJUNCTION WITH 231-CDLA-A1-00-ORL-0401-00

31 SITE | **DESCRIPTION** | **DATE** 09/05/2018

coe design
 landscape architecture

31 Pendine Tourism Attractor Project

SOFT LANDSCAPE STRATEGY (2 of 3)

231-CDLA-A1-00-ORL-0401-00

Tender Issue
 1:250 at A1 / 1:500 at A3 09.05.2018

RG | **JC**

Cardiff
 Carmarthenshire County Council

W/37415



- Circulation
 - 2 Person Bedroom
 - 4 Person Bedroom
 - Sanitary
 - Large Space
 - Storage
 - Staff Area
- Area Use Legend

W/37415



- Circulation
 - 2 Person Bedroom
 - 4 Person Bedroom
 - Sanitary
 - Large Space
 - Storage
 - Staff Area
- Area Use Legend

W/37415



② Roof Plan
1:100



① First Floor Plan
1:100

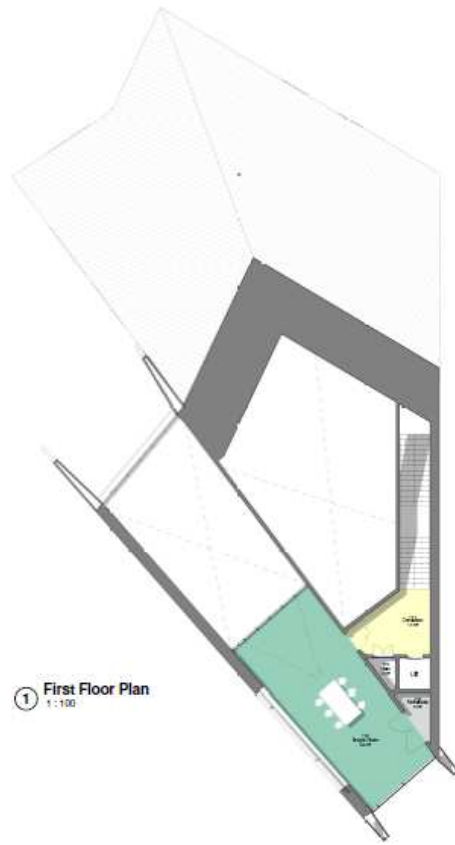
- ◻ Circulation
 - ◻ 2 Person Bedroom
 - ◻ 4 Person Bedroom
 - ◻ Sanitary
 - ◻ Large Space
 - ◻ Storage
 - ◻ Staff Area
- Area Use Legend

W/37415

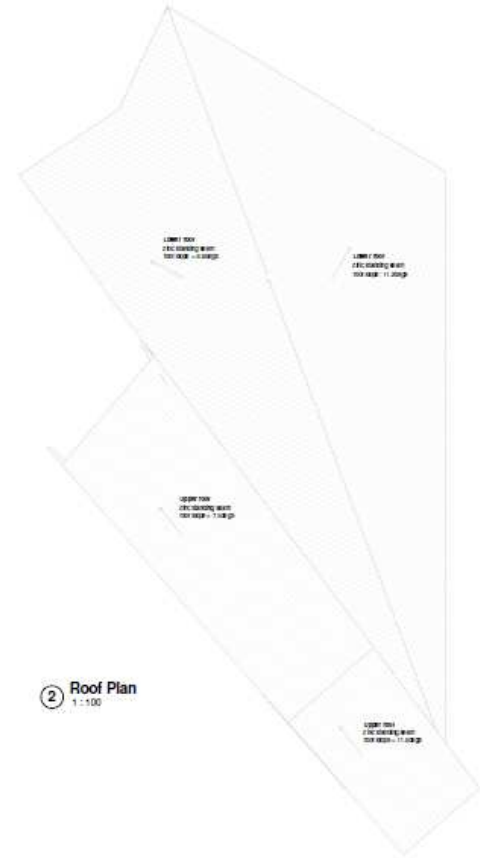


- Circulation
 - Sanitary
 - Large Space
 - Storage
 - Staff Area
- Area Use Legend

W/37415



① First Floor Plan
1:100



② Roof Plan
1:100

- Circulation
- Sanitary
- Large Space
- Storage
- Staff Area

Area Use Legend

W/37415



- 01 Sands of Speed Museum**
Two disabled employee spaces, 18no cycle stands, 4881 between south of events space and of the museum (2 no.)
 - 02 Hostel**
Two disabled employee spaces (by museum), 8no cycle stands south of events space
 - 03 Exhibition Esplanade**
Car exhibits and other installations, events, exhibitions for the Museum plus major beach events. Car access for the Museum off the access road. Seating steps provide views to the beach.
 - 04 Dune Gardens**
Interpretation, exhibition display boxes, native plants, seating, covered canopy, shelter spaces for buffering the wind & sand, installations, music and sound sculpture, temporary art.
 - 05 Events area**
Flexible space for events, festivals, display and community
 - 06 Dunes Adventure Play Area**
Continues with informal play to Museum gardens.
 - 07 Recycling, Waste and Outdoor Equipment Store**
 - 08 Access Road leading to Slipway and Beach**
 - 09 Primary Pedestrian Route**
Access across the beach from the bus stop and car park via a land bridge to the Events area, Hostel, Museum and promenade. Native grasses line the route with wayfinding trees, sculpture, seats.
 - 10 Main Car Park**
92no car spaces, 6no disabled spaces, 22no Motorcycle spaces, 19no cycle stands
 - 11 Overflow Car Park**
 - 12 Informal Sand Area**
For informal games, volleyball etc.
 - 13 Parry Thomas Centre**
Cafe and cafe outside seating area
- D** Disabled Parking Space
 — Application Site Boundary

Project	Scale	1:500 @ A1
Pendine Tourism Attractor Project	Date	22.02.18
Sketch No	Drawn	JdB / JC
231-SK-010_03		



Title: Landscape Masterplan



W/37415



1 North Elevation
1:100



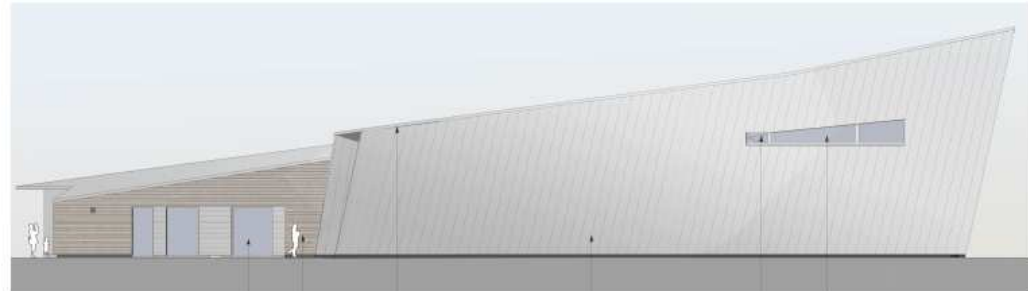
2 Entrance 1
1:100



3 Entrance 2
1:100



4 West Elevation
1:100



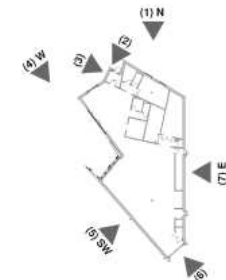
5 South West Elevation
1:100



7 Window
1:100



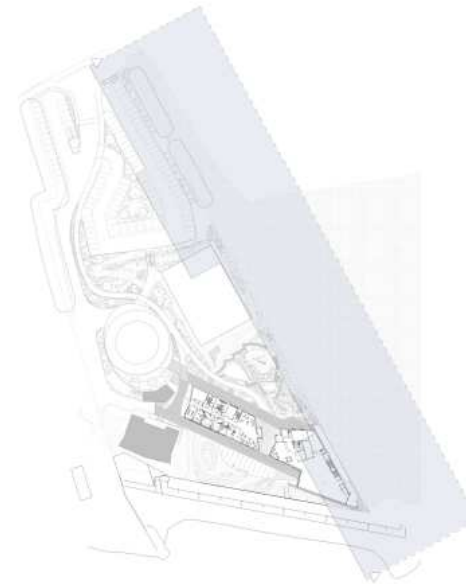
6 East Elevation
1:100



W/37415

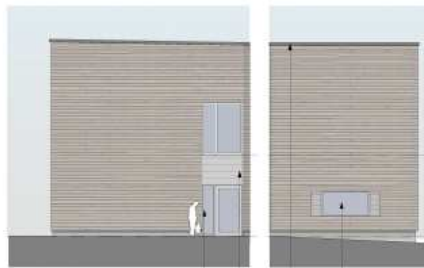


A Site Section
1 : 500



2 Key Plan
1 : 1000

W/37415



1 West Elevation
1 : 100



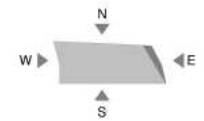
2 South Elevation
1 : 100



3 East Elevation
1 : 100



4 North Elevation
1 : 100



W/37415



Indicative 3D View. Proposed landscape not shown.

W/37415



Indicative 3D View. Proposed landscape not shown.

W/37415



W/37415



W/37415



W/37415



W/37415



W/37415



W/37415



W/37415



W/37415



W/37415



W/37415



W/37415



W/37415



W/37415



W/37415



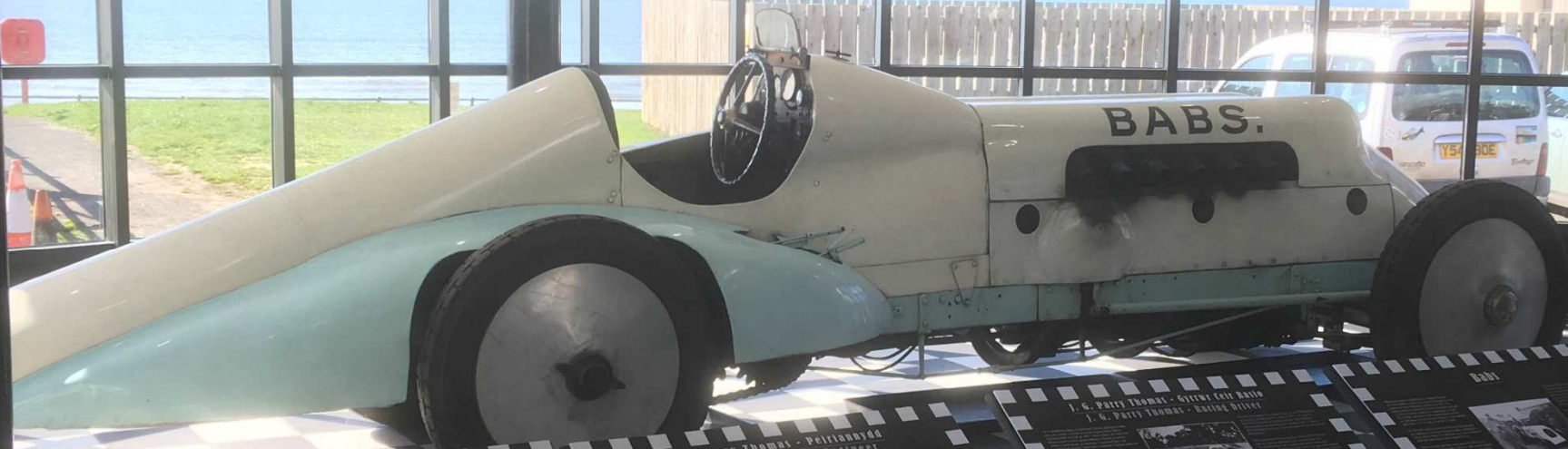
W/37415



W/37415



W/37415



J.G. Parry Thomas



**J.G. Parry Thomas - Peirioonydd
J.G. Parry Thomas - Engineer**



**J.G. Parry Thomas - Gyfnewidwr
J.G. Parry Thomas - Racing Driver**



BABS



W/37415



W/37415



W/37415



W/37415



W/37415





***CEISIADAU YR ARGYMHELLIR EU
BOD YN CAEL EU GWRTHOD***

**APPLICATIONS RECOMMENDED
FOR REFUSAL**

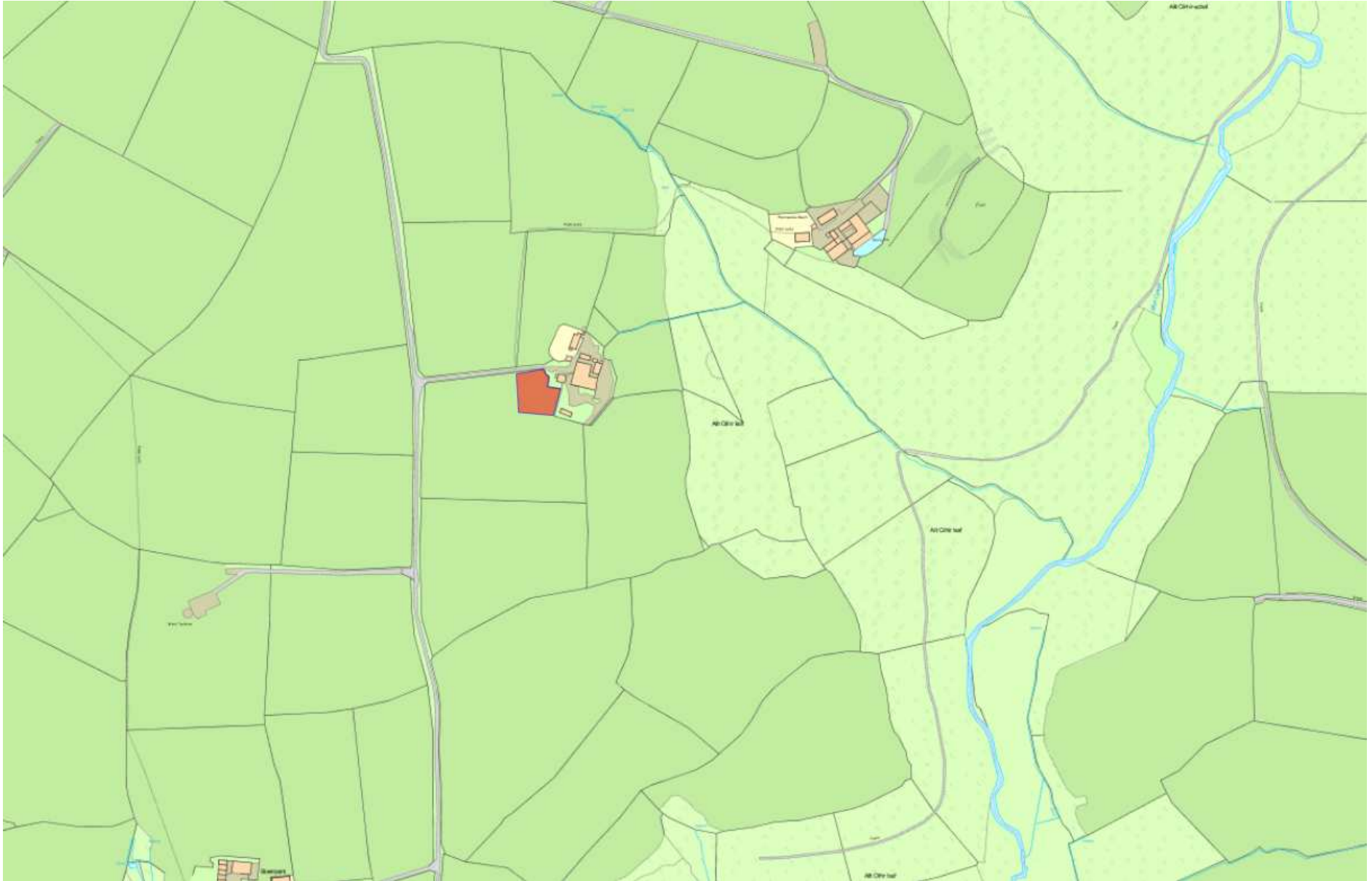


W/37135

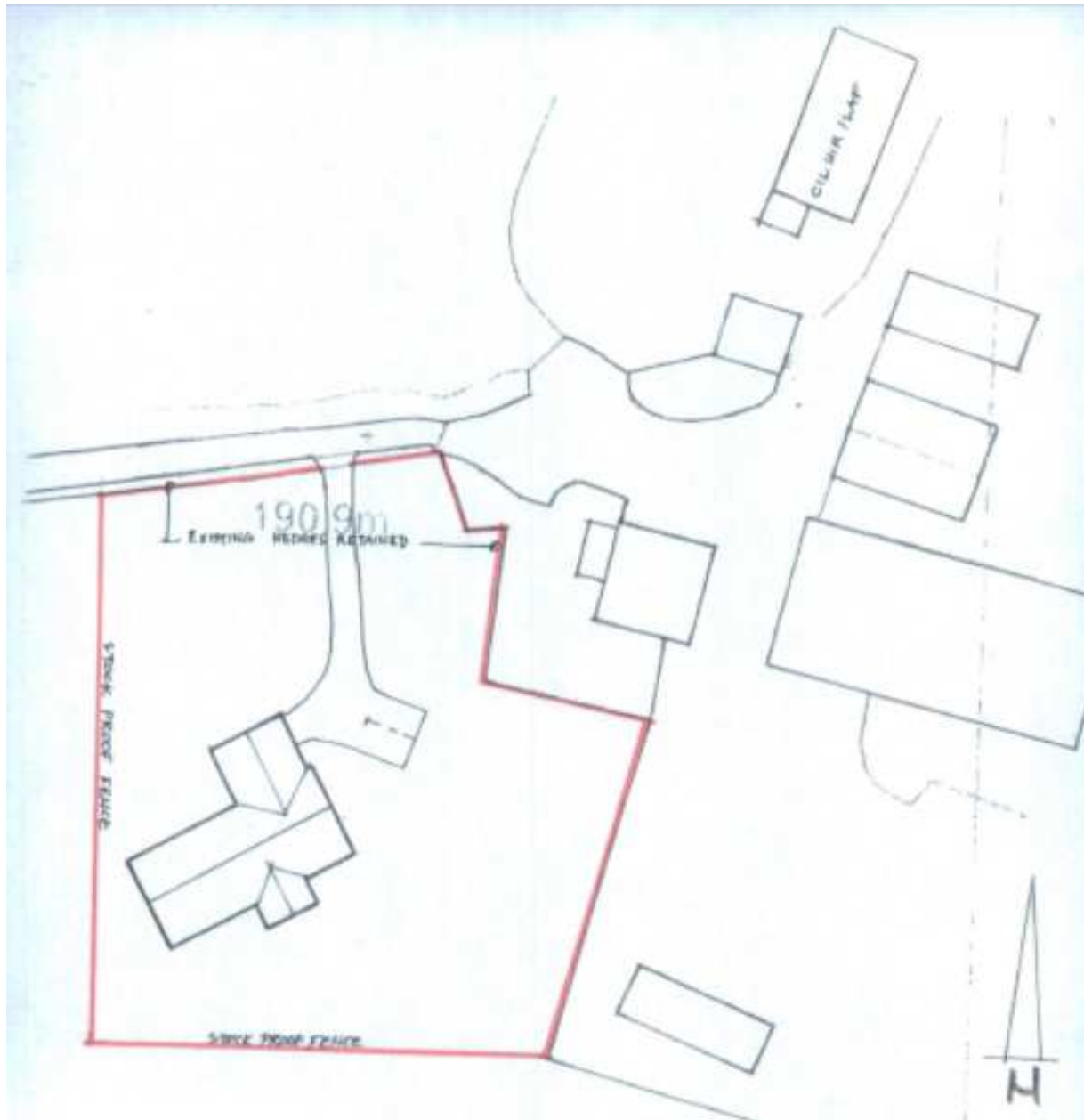
W/37135



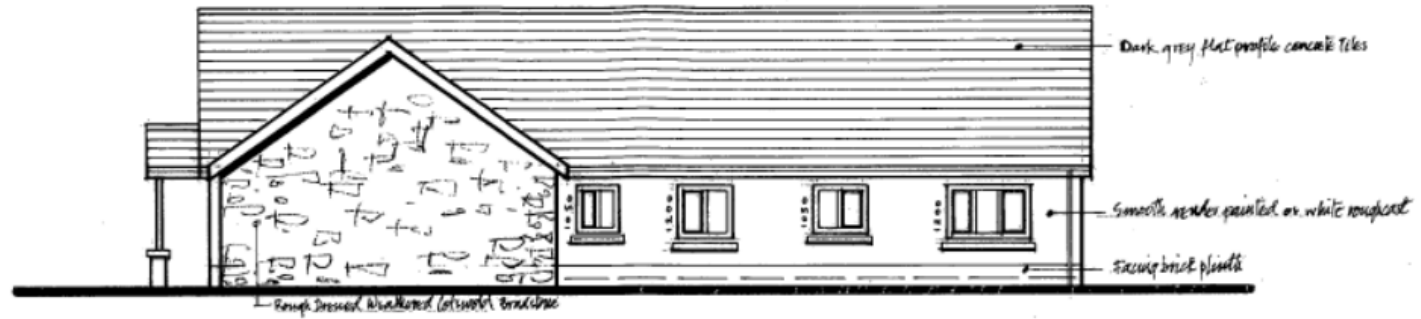
W/37135



W/37135



W/37135

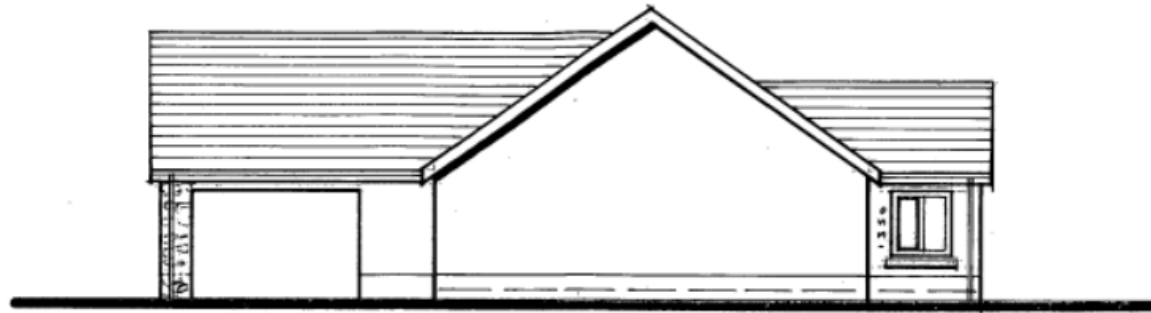


REAR ELEVATION



FRONT ELEVATION

W/37135

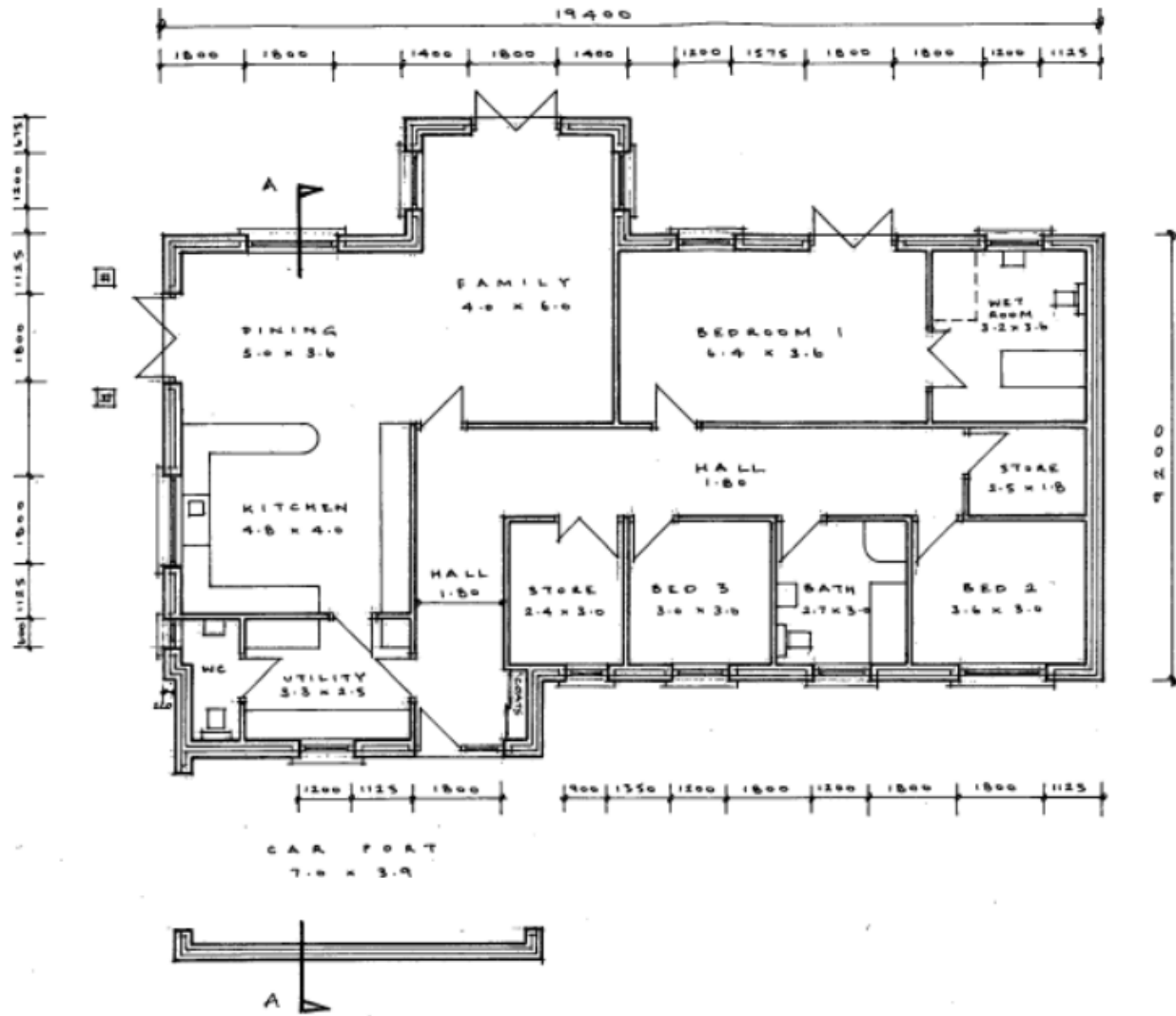


SIDE ELEVATION



SIDE ELEVATION

W/37135



W/37135



W/37135



W/37135



W/37135

